

# GROUND FLOOR/ PLANTA BAJA



UNIT 1	44.50m <sup>2</sup>
UNIT 2	44.50m <sup>2</sup>
UNIT 3	56.10m <sup>2</sup>
UNIT 4&5	121.20m <sup>2</sup>

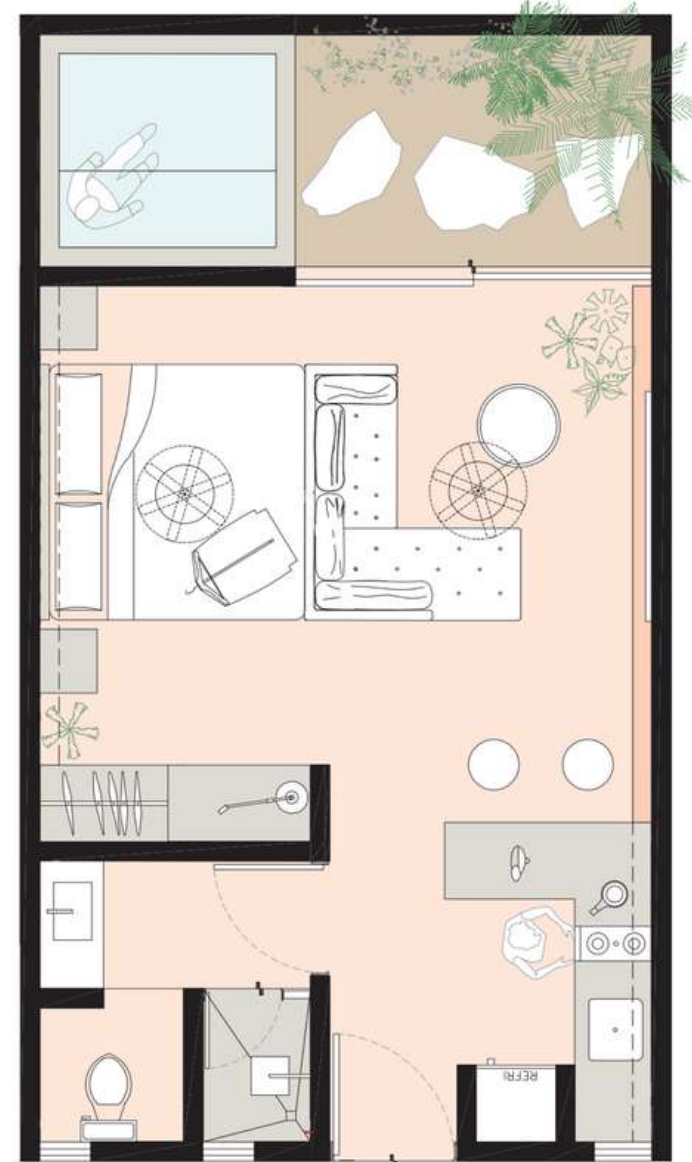
- A- ENTRANCES/ ENTRADAS
- B- OUTDOOR GYM/ GIMNASIO EN EL AIRE LIBRE
- C- SECURITY-RECEPTION/ SEGURIDAD-RECEPCIÓN
- D- LAUNDRY/ LAVANDERÍA
- E- STORAGE/ BODEGA
- F- BATHROOM/ BAÑO
- G- SHOWER/ DUCHA



# GROUND FLOOR/ PLANTA BAJA

## UNIT 1 (RESERVED) & 2 STUDIOS/ UNIDAD 1 (RESERVADA) Y 2 ESTUDIOS

-  BED X1/ CAMA X1
-  KITCHEN/ COCINA
-  BATHROOM/ BAÑO
-  HOME OFFICE/ OFICINA
-  PLUNGE POOL/ PISCINA DE INMERSIÓN
-  SMART TV/ TV INTELIGENTE
-  SOFA BED/ SOFA CAMA



### 1 Room Unit/ Unidad de 1 habitación

1 Room/ Habitación  
1 Bathroom/ Baño  
Kitchen/ Cocina  
Terrace & Plunge/  
Terraza y Piscina

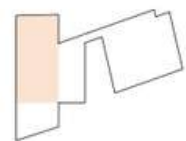
10.1 m2

Total 44.5 m2

\$USD 147,000




\$MXN 2,427,000

(exchange rate 11th April 2024/  
El tipo de cambio del 11 de abril de 2024.)



# GROUND FLOOR/ PLANTA BAJA

## ONE BEDROOM UNIT 3/ UNIDAD DE UNA HABITACIÓN, NÚMERO 3

-  BED X1/ CAMA X1
-  KITCHEN/ COCINA
-  BATHROOM/ BAÑO
-  HOME OFFICE/ OFICINA
-  PLUNGE POOL/ PISCINA DE INMERSIÓN
-  SMART TV/ TV INTELIGENTE
-  SOFA BED/ SOFA CAMA



1 Room Unit	
1 Room/ Habitación	
Sala	
Walk-In Closet/ Vestidor	
Bathroom/ Baño	
Kitchen/ Cocina	
Terrace/ Terraza	14.3 m <sup>2</sup>
<hr/>	
Total	56.6 m <sup>2</sup>
<hr/>	
\$USD	185,750
\$MXN	3,052,000

(exchange rate 11th April 2024/  
El tipo de cambio del 11 de abril de 2024.)

